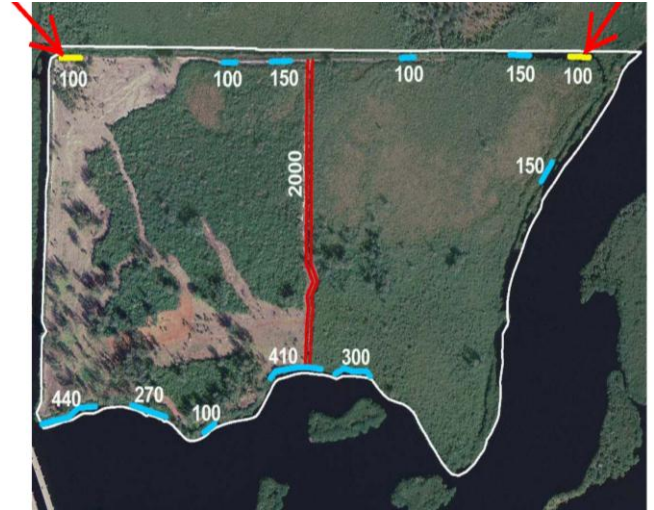


Caloosahatchee Creek Restoration Project

Location: Lee County, Florida
Client: EarthBalance®, Inc
Contact: Mr. Tom Odom, Project Engineer
407.719.5559
Value: \$395,000

Description: In 2008, TEI teamed with EarthBalance® and Mitigation Resources, LLC to evaluate restoration approaches, develop design and construction drawings, permit, and implement the hydrologic restoration of a parcel of land owned by Lee County, adjacent to the Caloosahatchee River.



The project site consists of two separate “cells” that had been hydrologically isolated through the construction of an earthen berm and levee system along the property perimeter. While there were several areas where the existing “cells” had been connected to adjacent drainage channels, the hydrologic outflow was controlled by several small culverts that restricted normal hydroperiods.

After design drawings by Mitigation Resources and based on field assessments made during TEI site visits to the property, a design change was proposed to use a cellular confinement geogrid, filled with #57 gravel/ballast stone, to stabilize the ditch blocks (versus a 12-inch layer of riprap). This approach resulted in an approximate cost savings of \$45,000, while providing more stable and drivable structures that will require little or no maintenance.



TEI also implemented the construction phase of the project, which included installation of earthen ditch blocks and geoweb low water crossings, removal of exterior berms, and complete back-filling of the central ditch, in order re-establish a hydrologic regime that mimics pre-development conditions.